



Upholstered Furniture

IMO FTP Code Annex 1, Part 8 - Test for Upholstered Furniture

This information sheet describes the general principles of the fire test to determine the ignitability of material combinations in upholstered furniture.

General

This test procedure specifies the method of determining the ignitability of material combinations (eg. covers and filling used in upholstered seating) when subjected to either a smouldering cigarette or a flame, which is equivalent to a match.

This method is described in full in IMO Resolution A.652 (16).

Before the test

Although general rules have been adopted by IMO, interpretation of those rules may differ between national authorities and classification societies. Therefore it is important both to determine which type approvals are to be obtained and to consult the relevant bodies. DBI has wide experience in co-operating with national authorities and classification societies and offers guidance about the steps, which must be taken to ensure that the process of testing will meet all the requirements.

Information Sheets: 'SHIP WHEEL-MARKING AND TYPE APPROVAL OF MARINE PRODUCTS' and 'TESTING AND INSPECTION FOR USGC'.

Test procedure

Testing with a smouldering ignition source

The test is performed on a test rig. A smouldering cigarette is placed in position along the junction between the vertical and horizontal test pieces. During the test the cigarette is allowed to smoulder completely. The progress of combustion is observed and any evidence of progressive smouldering ignition or of flaming in the interior and/or cover will be recorded. Two tests are performed.

Testing with a flame as the ignition source

A small butane flame is used as the flaming ignition source. The burner is placed axially along the junction between the seat and back. The specimen is exposed to the flame for 20 seconds. The progress of combustion is observed and any evidence of progressive smouldering ignition or of flaming in the interior and/or cover will be recorded. Flames, afterglow, smoking or smouldering that cease within 120 seconds after removal of the burner tube will be disregarded.

Specimens

Cover and fabric

interliner: Two specimens with dimensions 800 ± 10 mm x 650 ± 10 mm.

Upholstery

filling: Two specimens with dimensions 450 ± 5 mm x 300 ± 5 mm x 75 ± 2 mm

Two specimens with dimensions 450 ± 5 mm x 150 ± 5 mm x 75 ± 2 mm

Criteria to determine ignitability

The tested object shall not show any sign of development of smouldering fire or flames during one hour after the smouldering cigarette has been placed in position.

The tested object shall show no sign of development of smouldering, fire or flames more than 120 seconds after the ignition flame has been removed from the object.

If both these criteria are fulfilled, the tested material satisfies the criteria according to IMO Res. A.652 (16).

Test report

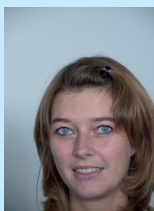
The test report will be written in English. It will contain all necessary information about the test specimen, test results and classification.

For further information you are welcome to contact



Lina Ivar Andersen

*phone: +45 36 34 90 35
e-mail: lia@dbi-net.dk*



Charlotte Hellensberg

*phone: +45 36 34 90 39
e-mail: cah@dbi-net.dk*

Danish Institute of Fire and Security Technology

Jernholmen 12, DK-2650 Hvidovre
Tlf.: +34 36 34 90 00, Fax: +45 36 34 90 01
E-mail: dbi@dbi-net.dk
www.dbi-net.dk

